

PART OF THE W 1/2 SEC 27, AND THE S.W. 1/4 OF SECTION 22, T.7N., R.1E., S.L.B. & M.

134

APPLE KNOLL VILLAGE PHASE 1

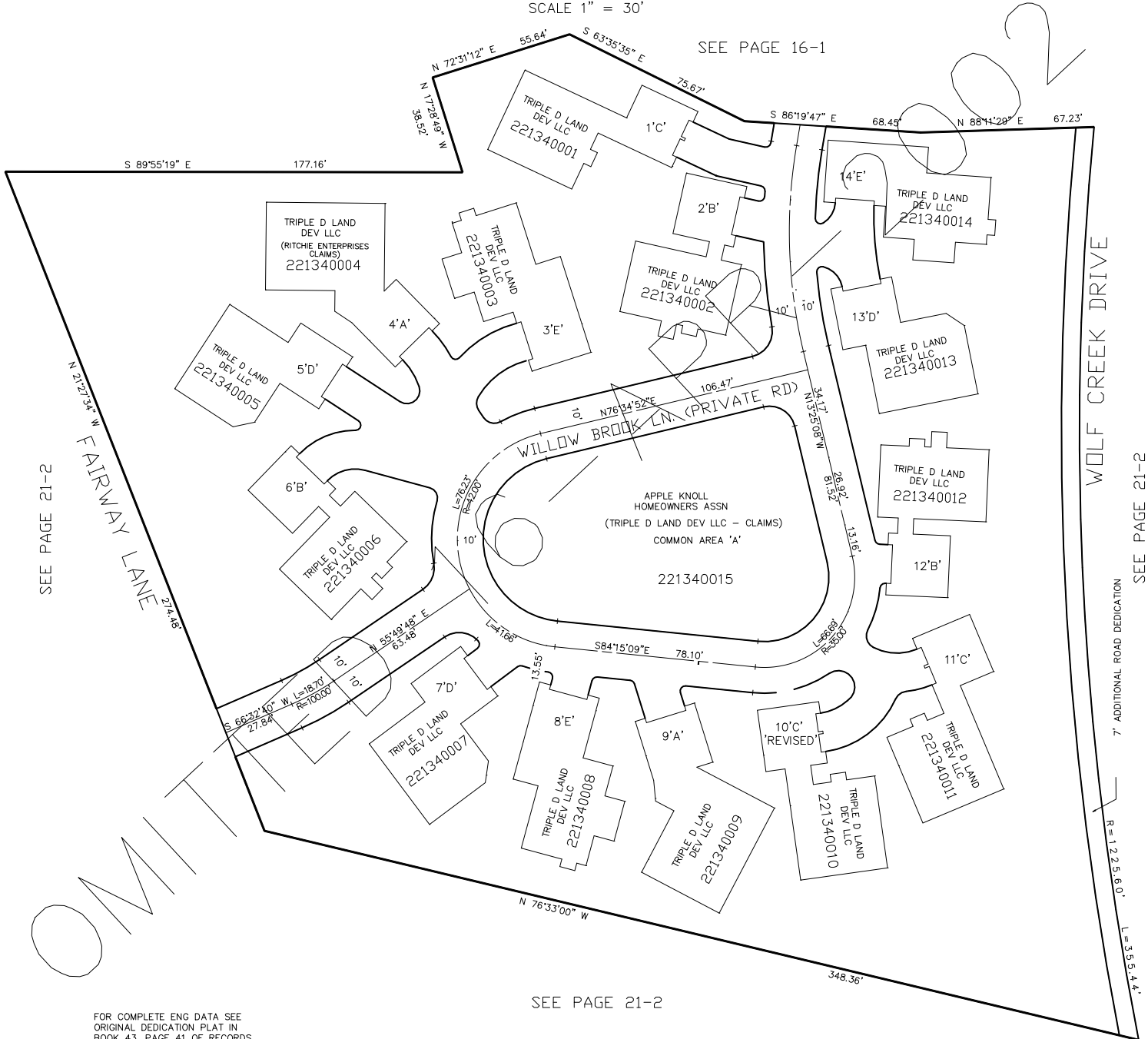
A PLANNED RESIDENTIAL UNIT DEVELOPMENT

TAXING UNIT: 203

IN WEBER COUNTY

SCALE 1" = 30'

SEE PAGE 16-1



FOR COMPLETE ENG DATA SEE
ORIGINAL DEDICATION PLAT IN
BOOK 43, PAGE 41 OF RECORDS.

SEE PAGE 21-2

SEE PAGE 21-2

7' ADDITIONAL ROAD DEDICATION

R=1225.60'
L=355.44'